

# CHAMBERLink

MARCH 2024



With more than 400 attendees, the Chamber's annual gala, Bella Notte in Tuscano, was a huge success! VIP Pre-Party guests enjoyed a fresh mozzarella pull demonstration, wine tastings and live music among many other exclusive offerings. Emcee Ron Dyer had everyone laughing with his "magic" tricks and our Silent and Live Auction items were certainly enticing. Thanks to all our sponsors for making this event possible!

*Yours Truly,*



**LEE'S SUMMIT**  
CHAMBER

## 2024 BOARD OF DIRECTORS OFFICERS

**Kirby Asplund, Chair**  
*The Asplund Group, LLC*

**Laura Maxwell, Chair-Elect**  
*Apricus Communications*

**Rick Smetana, Treasurer**  
*University of Central Missouri*

**Kristi Johnson-Ware, Chair Emeritus**  
*Central Bank of the Midwest*

## VICE CHAIRS

**Nikki Beard**  
*Saint Luke's Health System*

**Kelley Manning**  
*Beyond Wealth Advisors*

**Lauren Sobaski**  
*Fisher Phillips, LLP*

## BOARD MEMBERS

**John Coleman**  
*Coleman Equipment*

**Chad Dumas**  
*ReeceNichols Lee's Summit*

**Rachel Dyer**  
*Dyer Oil Graphics*

**Matt Fast**  
*Poo Squad*

**Gina Goodwin**  
*GEHA*

**Kevin Oldham**  
*Diffactory*

**Drew Reynolds**  
*Edward Jones*

**Jarvis Sackman**  
*Hillcrest Transitional Housing*

**Amy Schield**  
*Amy Schield Coaching*

**Jim Stoddard**  
*Budget Blinds Lee's Summit*

**Joan Vande Voort**  
*Bank Midwest*

**Tina Walcutt**  
*Door Systems*

**Joey Zarrillo**  
*ReMax Heritage*

**EX-OFFICIO**

**Mark Dunning**  
*City of Lee's Summit*

**Mayor Bill Baird**  
*City of Lee's Summit*

**Dr. David Buck**  
*R-7 School District*

**Kathrine Swanson**  
*MCC-Longview*

## CHAMBER STAFF

**Matt Baird, IOM, President**

**Cathy Young, IOM, Director of Financial Services**

**Janet Shelman, Admin. & Events Coordinator**

**Denise Elam, Director of Marketing & Communications**

**Megan Gray, Director of Special Events**

**Lisa Frogge, Director of Member Services & Ad Sales**

**Isabelle Rogers, Marketing Coordinator**

**Linda Driskill, Member Services Coordinator**

# A LETTER FROM THE PRESIDENT



Hard to believe February has already come and gone!

The Chamber was extremely active in February, from 14 outstanding businesses joining the LS Chamber to a fantastic and beautiful evening under the Tuscan stars at our Annual Gala, to a packed event space to hear from local developers highlighting all the great reasons why Lee's Summit

continues to outpace everyone else as the place to be. Yes, 2024 has already been a very busy year!

As we look to March, the Chamber turns its attention to the upcoming April election. We will be hosting two candidate forums, one for the LSR-7 School Board and the other for City Council/Municipal Judge. This is a great opportunity for members and the general public to come and learn more about the candidates.

Speaking of advocating, in February members from the Chamber spent time with other regional chambers at the state capitol, advocating for the local business communities. I would like to remind members to get out and vote on Tuesday, April 2, 2024.

The Chamber has a busy slate of programs and events this month including the monthly luncheon, where we'll host our Healthcare Forum & Expo and hear from a panel of healthcare professionals on a variety of medical-related topics. The Chamber will also initiate its Business and Bagels program that we're very excited to host. This will be a quarterly workshop series full of great information and presenters designed to help your business be successful!

Hopefully you were able to recommend a business for the Chamber's inaugural Excellence in Business Awards Presentation and Luncheon. This event will take place in April and the Chamber couldn't be more excited to host this event.

The Lee's Summit Chamber is looking forward to helping you reach your personal and professional goals in 2024!

*Yours Truly,*

**Matt Baird | President**  
Lee's Summit Chamber  
816.524.2424 | mbaird@lschamber.com

# BEHIND THE SCENES AT LONGVIEW MANSION

## Join the Chamber's Business Field Trip!

The Lee's Summit Chamber is excited to invite our members to experience a behind-the-scenes tour and an in-depth history lesson on the famous Longview Mansion.

Join us on Thursday, March 28 from 4 to 5:30 p.m. as we get a much clearer picture of why this has become a popular destination for weddings, events and so much more.

The Longview Mansion is located at 1200 SW Longview Park Dr. in Lee's Summit.

For more information, please contact Chamber President Matt Baird at mbaird@lschamber.com.



# LET THE MARCH MADNESS BEGIN

## Chamber Young Professionals to Host Watch Party

Join Chamber Young Professionals Thursday, March 21 for networking as we watch some of the best basketball games in the nation.

Chamber Young Professionals will be participating in a March Madness Bracket Challenge. Enter to play for just \$5. The winner will choose the benefitting nonprofit for all proceeds.

This is a great chance to network, get involved AND make a difference in your community.

To register for the watch party or to take part in our Bracket Challenge, contact Denise Elam at delam@lschamber.com.





## WELCOME TO OUR NEWEST CHAMBER MEMBERS

Feb. 1-29

### Associated Plastic Surgeons

info@apsc.com  
(913) 451-3722  
apsc.com  
2861 NE Independence Ave.

### Design Supply Doors

tvalencia@ddoors.build  
(816) 944-8916  
6800 E. Truman Rd.

### Elara Caring

cgregg@elara.com  
(816) 663-2731  
elara.com  
3215 Main Street Suite C

### Gameday Men's Health Lee's Summit

ari@gamedaymenshealth.com  
(816) 622-2710  
gamedaymenshealth.com  
200 NE Missouri Rd.

### Hawn Bedding

Adam@HawnBedding.com  
(816) 524-4296  
www.hawnbedding.com  
2350 NE Independence Ave.

### Horizon Lawn & Landscape

truman@horizonlawnkc.com  
(816) 347-8873  
horizonlawnkc.com  
PO Box 2201

### Inszone Insurance Services

jturner@inszoneins.com  
inszoneinsurance.com  
300 SE Wilson St.

### Jus Chill'n Grill'n & Catering

juschilln71@gmail.com  
(816) 269-3409  
Facebook.com/  
JusChillnGrilln&Catering  
661 NW Jefferson St.

### One Community Hospice & Palliative Care

rsullivan@onecommunity.healthcare  
(816) 805-0383  
onecommunity.healthcare  
14700 E 42nd Street S

### OnePoint Business & Insurance Services

jeff.tatro@opbi.us  
(916) 580-9694  
onepointbusinessinsurance.com  
1038 Leigh Ave. 100B

### Porlier Outdoor

**Advertising Company**  
jameschildress@porlier.biz  
(636) 463-2100  
porlier.biz  
127 Mulberry St.

### SL USA

marcelm@sl-ledusa.com  
(816) 405-7088  
1202 SW Clark Rd.

### Studio M3

dankennicutt@yahoo.com  
(816) 835-4765  
618 SW Third St.

## MEMBER RENEWALS

The following are this month's renewals and the number of years they've been members:

Cailas Cleaning Crew LLC . . . . .	1	The Smoothie Shop and Supplements . . . . .	3
Clockwork . . . . .	1	Nate Tate the Insurance Guy. . . . .	4
Precision Roofing . . . . .	1	LSR7 Facilities . . . . .	4
Medicare Solutions of Kansas City . . . . .	1	Brilliant Corporation . . . . .	4
Raintree Village . . . . .	1	The Donovan. . . . .	4
Straumann . . . . .	1	Sam's Club . . . . .	5
Mr. Appliance of Lee's Summit and Raymore . . . . .	1	GoodVets Lee's Summit . . . . .	5
The Fillmore Café . . . . .	1	Weber Flooring/Joe's Carpet . . . . .	5
IV Nutrition. . . . .	1	Konrad's Kitchen and Tap House . . . . .	5
Qualicare KC In Home Care . . . . .	1	Hearing & Balance Specialists of Kansas City, LLC . . . . .	7
Core Medical Center . . . . .	1	St. Michael the Archangel Catholic High School. . . . .	7
KC Scholars . . . . .	1	Mid USA Insurance Agency, Inc. . . . .	9
Ellie Mental Health . . . . .	1	Debbie White Homes - Real Estate Sales. . . . .	10
Emergency Mitigation Services . . . . .	1	Advanced Surgical Associates, LLC . . . . .	10
360 Dryer Vent Cleaning . . . . .	2	Driskill Business Development Group Inc. . . . .	10
Spectrum Business . . . . .	2	Woods Chapel United Methodist Church . . . . .	11
Metalsbetter Roofing & Sheet Metal Inc. . . . .	2	Alpha Mortgage . . . . .	13
Midwest Neurology and Chiropractic Center . . . . .	2	Summit Grill & Bar . . . . .	14
Success on the Spectrum - Lee's Summit . . . . .	2	Zerega Pasta . . . . .	15
TT2 Consulting LLC . . . . .	2	WITEC, L.L.C.-Whatever It Takes Electrical Contractors . . . . .	16
The Princeton Senior Living . . . . .	2	The Love Law Group, LLC. . . . .	16
MIVA Medical . . . . .	2	Summit Gastroenterology . . . . .	16
The Cherry Bomb Tattoo Co.. . . . .	2	Lead Bank . . . . .	17
KidStrong Blue Springs . . . . .	2	Big Creek Outdoors . . . . .	17
Diametric Brewing Co. . . . .	2	Rouse Frets White Goss Gentile Rhodes, P.C. . . . .	18
Kemp Strickler . . . . .	2	Pinnacle Bank . . . . .	18
GPS KC . . . . .	2	Earth Effects Outdoor Living, L.C. . . . .	19
Alphagraphics Lee's Summit/Belton . . . . .	2	Heartland Tanning, Inc.. . . . .	21
Ford Product Design . . . . .	2	Hunt Midwest Real Estate Development, Inc. . . . .	22
Lean Kitchen . . . . .	2	Equity Bank Downtown . . . . .	26
Turner Construction. . . . .	3	Owen Lumber . . . . .	28
Great American Bank . . . . .	3	ReDiscover . . . . .	45
Thrive Once More. . . . .	3	MCC-Longview . . . . .	50
Lauber Municipal Law . . . . .	3	Spire . . . . .	51
Chef Aristo's Curbside, Catering & Eatery . . . . .	3		
Business Personnel Services, Inc. . . . .	3		
Boost 4 Success . . . . .	3		
Navigating Senior Healthcare . . . . .	3		
Community Choice Pediatrics . . . . .	3		
Financial Life Bookkeeping & Solutions, LLC . . . . .	3		
Whataburger. . . . .	3		
Firestone Complete Auto Care . . . . .	3		
Level Up Concrete Lifting, LLC . . . . .	3		
Poo Squad Lee's Summit . . . . .	3		
Chris Bell Insurance . . . . .	3		
HCA Midwest Pain Management Center. . . . .	3		
Foundation Recovery Systems. . . . .	3		
One Hour Heating & Air Conditioning . . . . .	3		

*For your branded merchandise golf tournament needs, we've got you covered from tee to green.*

*And everything else in between...*

Contact us  
**816.434.5000**  
**info@dyeoil.com**  
**dyeoil.com**

PROMOTIONAL PRODUCTS • PRINT • DESIGN SERVICES

# MEMBER NEWS ITEMS



**RUNNING  
OF  
THE  
BEDS**

**Saturday, April 6th**

**FLOURISH FURNITURE BANK TO HOST KC'S FIRST-EVER BED RACE**

On Saturday, April 6, Flourish is hosting Running of the Beds, a community festival that will help provide free beds for families. In this thrilling, one-of-a-kind race, fifteen teams will compete neck-to-neck on home-made beds on wheels. Proceeds from the event will provide an entire home of furnishings for 1,300 families overcoming housing insecurity this year.

This event is not one to miss! Located in the heart of downtown Grandview at First Baptist Church, there will be field games, food trucks, and a performance by Mr. Stinky Feet. Following the bed race, there will be a kids' and families' parade of scooters, bikes, skates, and strollers. The Flourish race will include double-elimination heats between two teams on a 250-foot course. Please note the Flourish bed race rules require beds and riders to be oriented feet-first for safety.

Make a long-lasting impact in our community by signing up to race a bed today. The event is free to attend and register. Bed race teams are asked to raise \$500 or more through sponsorships for their team. Costumes and PJs are encouraged!



**DISCOUNTED  
MEMBERSHIPS**

*Now Available!*

**STRETCHLAB LEE'S SUMMIT IN SUMMIT FAIR IS OPENING SOON**

We are putting the finishing touches on our construction and the StretchLab pre-sale is coming to a close.

All members will have the first look at our finished studio beginning on March 4 and our soft-opening is set for March 18.

Don't wait to take advantage of a free demo stretch and personally experience our premier 1:1 assisted stretch service as well as secure our pre-sale discount pricing before it ends!

Contact AJ Spinello at 913-744-9123 to make an appointment for a free demo stretch experience!



**Spring  
Round Up**

**FRI, MARCH 29  
& SAT, MARCH 30  
10am-6pm**

# BELLA NOTTE

*in Toscana*



Our 2024 Gala, Bella Notte in Tuscano, was a night well spent among more than 400 Chamber members.

The annual gala is not only a Chamber fundraiser, but also the funnest night of the year with the finest Tuscan cuisine, live music, entertainment and a live and silent auction.

Many won trips to Mexico and Tuscany. Some took home fancy wines and bourbons from our wine and spirits pull. And others dug into some fresh mozzarella during our exclusive VIP experience with Madam Mozzarella.

Whether you were a guest, VIP attendee, award winner, volunteer or sponsor, we truly appreciate your dedication to the Chamber and to your business community.

## Expert and Convenient Ear, Nose, and Throat Care

Saint Luke's Ear, Nose, & Throat Specialists are now seeing patients on the Saint Luke's East Hospital campus. Our board-certified ear, nose, and throat specialists can help you hear better, breathe better, and feel better.

We treat the full range of ear, nose, and throat conditions, including:

- Hearing issues
- Chronic ear and sinus issues
- Voice and swallowing problems
- Thyroid nodules
- Pediatric ear tubes

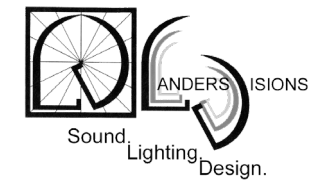
◆ Schedule a consultation  
 Saint Luke's Ear, Nose, & Throat Specialists  
 816-932-8663 | saintlukeskc.org/eastent



# THANK YOU SPONSORS!



Cleaning. Restoration. Construction.



# HEALTHCARE FORUM & EXPO

## Learn the Latest from Healthcare Experts



**11 a.m. | Friday, March 15 | Abundant Life Core Building**

Learn the state of healthcare in Lee's Summit at the Chamber's Healthcare Forum & Expo at the Monthly Membership Luncheon from 11 a.m. to 1 p.m. Friday, March 15 at Abundant Life Core Building (402 SW Persels Rd.).

Panelists include representatives from University Health, Lee's Summit Medical Center, ReDiscover and Saint Luke's East Hospital. Our moderator will be Robin Todd with Mindful Momentum.

Come learn about the latest trends and more at this informative and fun luncheon.

Those interested in displaying marketing materials during the expo may pay \$150 to reserve an entire 8' table or \$85 for half a table.

Each table reservation includes one luncheon ticket. Additional tickets may be purchased separately for \$30 each.

Table setup will be from 10:30-11 a.m. Friday, March 15. Due to limited capacity, 15 tables are available on a first-come, first-served basis. Vendor space is subject to approval based on relevance to forum content.

For more information, contact Cathy Young, Director of Financial Services, at [cyoung@lschamber.com](mailto:cyoung@lschamber.com).

Community ORIENTED.  
Community MINDED. Community ANSWERS.  
**COMMUNITY BANK.**

**STERLING BANK**  
Member FDIC

**KANSAS CITY**  
300 Ward Parkway | (816) 627-6600 | [www.sterbank.bank](http://www.sterbank.bank)

*Your FUTURE Is with Us!*

# PLENTY OF OPPORTUNITIES TO NETWORK

Register online at [lschamber.com](http://lschamber.com)!

**RECESS**  
for **SUCCESS**

*exercising your mind, strengthening your business*

## RECESS FOR SUCCESS

**Run an Easier Business with Systems**

4-5:15 p.m. | March 5 | Missouri Innovation Campus  
Are you dissatisfied with your current position? Do you find it difficult to work for a boss? Perhaps you want the freedom to do what you want to do. Amber's going to discuss what systems can do for your business. *Sponsored by UCM Lee's Summit.*



## CHAMBER AFTER HOURS Chef Aristo's Curbside, Catering & Eatery

4:30 p.m. | March 14 | 862 SW Blue Pkwy.  
Enjoy Greek appetizers and Ouzo Lemonade at our upcoming After Hours event! Network with familiar faces while enjoying delicious food and good company! Register now!

**Join us for LUNCH**

*Yours Truly, LS LEE'S SUMMIT CHAMBER*

## HEALTH CARE FORUM & EXPO Monthly Membership Luncheon

11 a.m to 1 p.m. | March 15 | Abundant Life  
Hear updates from University Health, Lee's Summit Medical Center, ReDiscover and Saint Luke's East Hospital at our upcoming Health Care Forum & Expo at Abundant Life. Our Moderator will be Robin Todd with Mindful Momentum. *Sponsored by Truman Heritage Habitat for Humanity.*



## CHAMBER BEFORE HOURS OverBoard Coffee

7:30-8:30 a.m. | March 26 | 825 NE Lakewood Blvd.  
Start your morning off on the right foot as you enjoy breakfast treats and coffee at OverBoard Coffee. Wear your Royals attire and learn about this incredible business as you network with business leaders from across the metro!



## BUSINESS FIELD TRIP Historic Longview Mansion

4-5:30 p.m. | March 28 | 1200 SW Longview Park Dr.  
Experience a behind-the-scenes tour of the historic Longview Mansion! Come see why this historic home has become a destination for weddings and events across the state and the nation!



On April 2, Lee's Summit voters will cast their ballots in the Municipal Election to elect four Councilmembers, a new Municipal Judge and two LSR-7 School Board Members.

The Lee's Summit Chamber will host two candidate forums in March where you'll learn about the candidates and where they stand on important issues facing the community. Join us to get a better idea of what their vision is for Lee's Summit.

To ensure the community is fully engaged in this forum, the event will be

recorded and shared on Facebook and YouTube as well as posted on the Chamber's website.

All events are free and open to the public and give residents the opportunity to learn more about the candidates running for office.

During each of the forums we will allow time for questions from the public. If you have a question for the candidates, we invite you to submit them to Matt Baird, Chamber President, at mbaird@lschamber.com.

**LSR-7 CANDIDATE FORUM**  
*Wednesday, March 6 | 6:30-8:30 p.m. | MIC*

**CANDIDATES:**

- Dan Blake
- Bill Haley
- Reuben Mitchell
- Stacie Myers
- Rodrick King Sparks
- Juanice Williams

**CITY COUNCIL/MUNICIPAL JUDGE CANDIDATE FORUM**  
*Wednesday, March 13 | 6:30-8:30 p.m. | MIC*

**CANDIDATES:**

- District 1 — Hillary Shields
- District 2 — Trish Carlyle, Shari Frazier, Bob Gough
- District 3 — Cynda Rader
- District 4 — Fred DeMoro

**MUNICIPAL JUDGE:**

- Sam Buccero
- Venessa Maxwell Lopez



# BUSINESS AND BAGELS

## Chamber's New Quarterly Workshop Series

Experience a new series of educational and interactive workshops designed to help businesses thrive in a diverse environment. Discover how you can grow your business to wider audiences and take advantage of the opportunities that are available within our community.

### TOP 5 WAYS BUSINESSES CAN BE WELCOMING IN 2024

**Thursday, March 21**

With Robin Todd, Mindful Momentum

### GAIN AN UNDERSTANDING OF FINANCIAL OPPORTUNITIES AVAILABLE TO SMALL BUSINESSES

**Thursday, June 13**

A panel discussion with:

- Jared Reeves, Country Club Bank
- Lynn Hinkle, Great Southern Bank
- Theodis Watson, CrossFirst Bank
- Joan Vande Voort, Bank Midwest
- Ben Plank, CommunityAmerica Credit Union

### LEARN HOW TO BUILD A RELATIONSHIP WITH ONE OF THE FASTEST-GROWING DEMOGRAPHICS

**Thursday, Sept. 19**

With speakers:

- Carlos Gomez, President of the Hispanic Chamber of Commerce of Greater Kansas City
- Beto Lopez, Lee's Summit Mayor Pro Tem

### DEMYSTIFY THE GRANT-MAKING SELECTION, PROCESS AND TIMELINE AS IT RELATES TO ISSUES OF DEI

**Thursday, Dec. 19**

A panel discussion with:

- Dr. Elaine Metcalf, Pro Deo Youth Center
- Trisha Drape, Kauffman Center for the Performing Arts
- Rachelle Walker, Mazuma Credit Union
- Sherie Small, Spectrum Reach - "Pay it Forward" Program



8-8:30 a.m. | Check-in, Bagels & Coffee

8:30-10 a.m. | Workshop

Bridge Space Event Space | 210 SW Market St.

**Coming in 2025...**

**HOW CAN YOUR BUSINESS CREATE A FOUNDATION THAT SHOWS A CULTURE OF CARING?**

Register Now At [Lschamber.com/Events](https://lschamber.com/Events)

# 2023 CHAMBER AWARD WINNERS

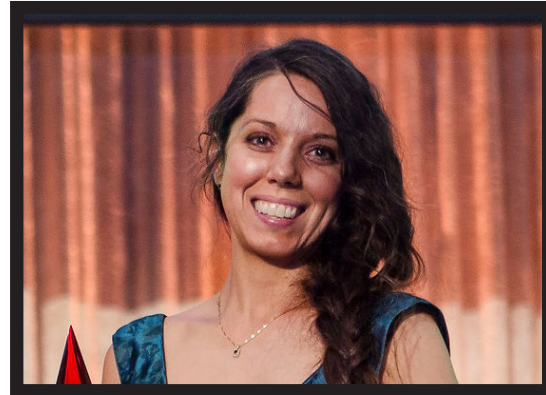
Congratulations to Our Deserving Award Recipients

## 2023 HALL OF FAME INDUCTEE



SERVPRO Lee's Summit

## 2023 VOLUNTEER OF THE YEAR



Amy Schield, Amy Schield Coaching

## 2023 STEVE GOULDSMITH NEW MEMBER OF THE YEAR



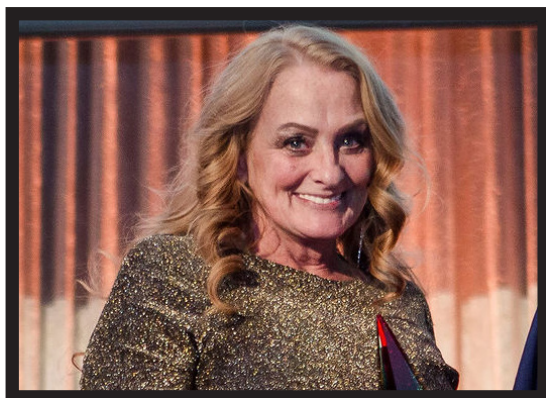
Bill & Dawn Frey, Bill Fry The Plumbing Guy

## CARL CHINNEY LIFETIME MEMBER AWARD



Bob Glaser, Kim Connects HOME Team

## 2023 BOB GLASER AMBASSADOR OF THE YEAR



Tina Walcutt, Door Systems, Inc.

**Mr. Handyman Services:**

**Mr. Handyman**  
HOME IMPROVEMENT PROFESSIONALS  
a neighborly company

• Doors	• Ceiling	• Siding	• Decks
• Windows	• Floors	• Gutters	• Fixtures
• Carpentry	• Bathrooms	• Kitchens	• Basements
• Drywall	• Patios	• Painting	• Much More!

**816-319-2500**

676 SE Bayberry Ln Ste 102  
Lee's Summit MO 64063



Hear from legislators and state officials, tour the State Capitol and Supreme Court, meet Gov. Parson and network with other Chamber members on Tuesday, April 9 during our annual Legislative Day in Jefferson City

The day begins at 8:15 a.m. when the team at Security Bank will sponsor our morning send-off.

Central Bank will welcome us to Jefferson City. We'll enjoy food and several impactful sessions with guest speakers.

At the end of the fun day, we'll hop on the Amtrak and return to Lee's Summit.

The cost to attend is \$80 per person. To register, visit [lschamber.com/events](http://lschamber.com/events).

For more information, contact Chamber President Matt Baird at [mbaird@lschamber.com](mailto:mbaird@lschamber.com).

*Meetings made memorable.*

Perfect spaces for strategizing, socializing, and optimizing. [Learn more](#)

**unity**  
Village

**Lucky IT'S MARCH**

.....of course we've already had four fake Springs

.....of course everyone is Irish on the 17th..... but I truly am!

.....of course we have more sunlight in the evening

**IT'S MARCH .....OF COURSE IT'S TIME TO ORDER YOUR NEW MERCH!!**

**B&T**  
BRANDING

Bev Howe, Owner  
816.807.1909  
[bev@bandtspecialties.com](mailto:bev@bandtspecialties.com)  
[bandtspecialties.com](http://bandtspecialties.com)

B&T Specialties



# EVENTS THIS MONTH

*Please note: All events are subject to change. Please visit [LSchamber.com](http://LSchamber.com) for the most up-to-date information.*

## March 5

- 8 a.m., Ambassador Committee, Chamber Office
- 9:30 a.m., New Member Orientation, Chamber Office
- 4 p.m., Recess for Success, Missouri Innovation Campus

## March 6

- 3 p.m., Ribbon Cutting: TNC Community, 17601 E US Hwy. 40 Suite A, Independence, MO
- 6 p.m., Candidate Forum: LSR-7 School Board, Missouri Innovation Campus

## March 7

- 8 a.m., Health & Human Services Committee, Lee's Summit Medical Center- Arbor Room
  - Quarterly Partners Breakfast, Closed Meeting

## March 12

- 8 a.m., Leadership Lee's Summit, Closed Meeting
- 4 p.m., Annual Golf Task Force, Chamber Office

## March 13

- 8 a.m., Business Development Council, Chamber Office
- 6 p.m., Candidate Forum: City Council/Municipal Judge, Missouri Innovation Campus

## March 14

- 8 a.m., Executive Committee, Chamber Office
- 4:30 p.m., Chamber After Hours, Chef Aristo's Curbside, Catering & Eatery

## March 15

- 11 a.m., Monthly Membership Luncheon, Abundant Life Core Building

## March 19

- 9:30 a.m., Ribbon Cutting: The Merrymaker Collective, 959 NE Rice Rd.
  - 11 a.m., Diversity and Inclusion Committee, Bridge Space

## March 20

- 8:30 a.m., Education Committee, St. Michael the Archangel Catholic High School
  - Noon, Board of Directors Meeting, TBD

## March 21

- 8 a.m., Business & Bagels, Bridge Space
- 3:30 p.m., Military Affairs Committee, American Legion
- 4:30 p.m., Chamber Young Professionals Networking, Johnny's Tavern Lee's Summit

## March 22

- 7:30 a.m., Governmental Relations Committee, Missouri Innovation Campus
  - 10 a.m., Ribbon Cutting: Studio M3, 618 SW Third St.

## March 26

- 7:30 a.m., Chamber Before Hours, OverBoard Coffee
- 4 p.m., Annual Golf Task Force, Chamber Office

## March 27

- 8 a.m., Council of Chairs, Chamber Office
- 10 a.m., Ribbon Cutting: El Plato, 22 SW 3rd St.
- 11 a.m., Young Professionals Committee, Chamber Office

## • March 28

- 4 p.m., Business Field Trip: Longview Mansion, 1200 SW Longview Park Dr.



LEE'S SUMMIT  
CHAMBER

## 2024 Partners

### PLATINUM

Country Club Bank  
Kelly Construction Group  
Saint Luke's Health System  
SERVPRO of Lee's Summit

### GOLD

Bill Fry the Plumbing Guy  
Great Southern Bank  
Raintree Village  
Security Bank  
Tingle Flooring  
University of Central Missouri- Lee's Summit

### SILVER

AFC Heating and Cooling  
Beyond Wealth Advisors  
Budget Blinds of Lee's Summit  
CEAH Real Estate Services, LLC  
Central Bank of the Midwest  
CommunityAmerica Credit Union  
Creative Planning  
Door Systems, Inc  
Emprise Bank  
Equity Bank  
GEHA  
John Knox Village  
Kansas City Cannabis Co.  
KC Dumpster Company LLC  
Lee's Summit Medical Center  
MO Association of Trial Attorneys  
Performance Foodservice  
Rocktops Granite  
The Purple Guys  
Southern Bank  
Spilker McKeone & Nelson PC  
Sterling Bank of Kansas City

### BRONZE

AlphaGraphics Lee's Summit/Belton  
B&T Specialties, LLC  
BV Contracting Solutions  
Checklist Media  
Chinnery Evans & Nail, P.C.  
Developing Potential, Inc.  
Diffactory  
Dyer Oil Graphics  
Exterior Plus Roofing  
First Federal Bank  
Johnny's Tavern Lee's Summit  
Level Up Concrete Lifting, LLC  
LifeGoals Strategies Group/ Rodney Loesch CFP  
Midwest Property Resources  
Missouri Central Credit Union  
Mr. Appliance of Lee's Summit and Raymore  
Mr. Handyman of Lee's Summit, Raymore & Grandview  
Parker Swearngin, LLC  
Simmons First National Bank  
TPC Interiors, Inc.  
Unity Village  
Ward Development